

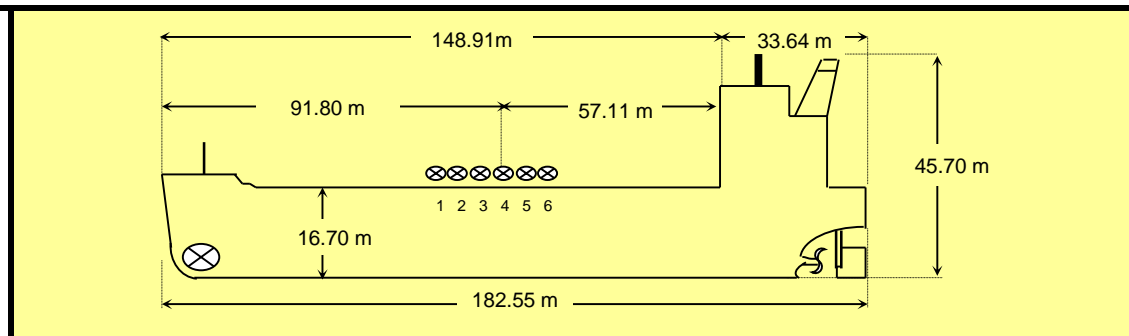
SHIP'S PARTICULARS OF FORTUNE GLORY

CALL SIGN	3EGQ6
FLAG	PANAMA
PORT OF REGISTRY	PANAMA
DESIGN	DOUBLE HULL
OFFICIAL NUMBER	50906-PEXT
IMO/LLOYDS NUMBER	9234678
CLASS SOCIETY	DNV
CLASS NOTATION	DNV +1A1,Tanker for Oil and Chemical ESP,Ship type 3,E0, ICE-1B,VCS-2
	LCS-SID, CLEAN
P & I CLUB	WEST OF ENGLAND (LUXEMBOURG)
OWNERS	EVER WEALTH SHIPPING CORP. LTD RM 1318 HOLLYWOOD PLAZA, 610 NATHAN ROAD MONGKOK KOWLOON, HONGKONG
OPERATORS	EURO ASIA SHIPPING AND SERVICES PTE LTD 89 SHORT STREET #10-07 GOLDEN WALL CENTRE SINGAPORE

KEEL LAID	05-Mar-01
LAUNCHED	08-Jun-01
DELIVERED	17-Dec-01
CONTRACT	-
SHIPYARD	HYUNDAI MIPO DOCKYARD,ULSAN,SOUTH KOREA

SATELLITE COMMUNICATION		
	INMARSAT-F	INMARSAT-C -1
PHONE	870 773701653	437054310
FAX	870 783201943	-
INMT-C - 2	437054311	
Mobile	0086 13826108972	
MMSI	370543000	
E-mail	fortuneglor@glorytanker.com	

PRINCIPAL DIMENSIONS	
LOA	182.55 m
LBP	175.00 m
BREADTH (Moulded)	27.34 m
DEPTH (Moulded)	16.70 m
HEIGHT (Maximum)	46.00 m
BRIDGE FRONT - BOW	148.91 m
BRIDGE FRONT - STERN	33.64 m
BRIDGE FRONT - M'FOLD	57.11 m
BOW - MANIFOLD	91.80 m



TONNAGE	REGD	SUEZ	PANAMA
NET	10129	20859.66	-
GROSS	23235	24306.33	19358
REDUCED GROSS TONNAGE	-	-	-

LOAD LINE INFORMATION	FREEBOARD	DRAFT	DWT
SUMMER	5.514 m	11.217 m	37278 t
WINTER	5.740 m	10.980 m	36206 t
TROPICAL	5.280 m	11.450 m	38354 t
LIGHTSHIP	14.320 m	2.580 m	8696 t
NORMAL BALLAST COND	10.09 m	6.64 m	17134 t
SEG. BALLAST CONDN	9.980 m	6.750 m	26276 t

TANK CAPACITIES (cbm)					
CARGO TANKS (98 %)				BLST TKS (100 %)	
COT 1	3,008.40	3,008.40	FW Tanks (100%) (P) - 82.5 (S) - 97.4 DW(P)-29.8 BW(S)-14.9	DBT 4C	1354.7
COT 2	3,593.00	3,593.00		WBT 1W	3062.9
COT 3	3,585.10	3,585.10		WBT 2W	2708.40
COT 4	3,597.40	3,597.40		WBT 3W	2704.40
COT 5	3,585.10	3,585.10		WBT 4W	2116.6
COT 6	3,302.60	3,302.20		WBT 5W	2012.8
SLOP	432.30	432.30	WBT 6W	3011.3	
RESIDUAL	66.00			FORE PEAK	1593.7
TOTAL	42273.8	224.6		AFT PK	417.8
OTHER DETAILS					
FWA	250 mm	Level Gauge	Fixed Radar		
TPC@Summer	46.1 mt	H.Level alarm	Gauge		
Overfill Alarm	98%		95%	TOTAL	18982.60

MACHINERY / PROPELLER / RUDDER	
MAIN ENGINE	HYUNDAI MAN B&W 6S50 MC-C
M.C.R.	12,870 BHP X 127.0 RPM
N.C.R.	10,940 BHP X 120.3 RPM
GENERATOR (3 sets)	HYUNDAI 6L 23/30, 4 STROKE
PROPELLER	4 blade,5.80 m,Ni-AL Bronze
RUDDER	Semi Spade Type
STEERING GEAR	Rotary Vane Type
BOW THRUSTER	1207 BHP
FW GENERATOR CAP	20 Tons/Day
FIRE WIRE	2 X 28 MM DIA

BUNKER TANKS 98%	
FOT (P)	477.8
FOT (S)	566.9
HFO SER(P)	39.9
HFO SET(P)	35.80
TOTAL	1120.4

DO (P)	59.20
DO (S)	33.7
DO SER(P)	37.50
DO SET(P)	25.20
TOTAL	155.60

WINCHES / WINDLASS / ROPES / EMERGENCY TOWING			
	FRD	AFT	PARTICULARS
WINCHES	6	6	BHC-32.1 T,Hauling Speed-15 mtrs/min,Heaving Pwr-15.0 T
MRG ROPES	4	4	Kapa Flex /Fwd-64mm ,BS-75 t ,Aft-56 mm,BS-58.1t/220m
MRG ROPES	2	2	Kapa Flex/Fwd-57mm,BS-61.2 t,Aft-64 mm,BS-82.6t/220m
MRG ROPES	3	3	Karat Maxi, 56 mm, 200 mtrs, BS-58.1 t
WINDLASS	2	-	Hauling Speed-9 mtrs/min,Heaving Pwr-20.7 T
ANCHOR	2		Port - 11 Shackles / Stbd - 11 Shackles, Cable dia-65 mm
EMERGENCY TOWING ARRANGMENT	1	-	KETA-40F,SWL-200T/ Bow Chain Stopper Tongue 76 mm Chain
	-	1	KETA-20A, SWL -100 T / Wire + Drum type 63 mm / 75 M Wire

CARGO AND BALLAST PUMPING SYSTEM -FRAMO			
MAIN PUMPS	NO.	CAPACITY	MODEL/AT HEAD
CARGO OIL P/P's	10	500 M3/Hr	SD-200/130 mtrs
CARGO OIL P/P's	2	320 M3/Hr	SD-150/130 mtrs
CARGO OIL P/P	2	150 M3/Hr	SD-125/130 mtrs
PORTABLE P/P	1	100 M3/Hr	TK-80/70 mtrs
BOOSTER P/P	1	500 M3/Hr	TK-6/40 mtrs
BALLAST PUMP	2	750 M3/Hr	SB-300/25 mtrs
Res.Tk Pump	1	20 m3/hr	ELEC.ROTOR PP
Fire + Foam pump	1+1	130 m3/hr + 360 m3/hr	
Emerg.Fire Pump	1	70 m3/hr	--

LIFE BOATS	
Freefall - 30 Persons	
LIFE RAFTS	
4 x 16 P + 1 x 6 P	
CRANES	
Hose Crane	10 T
Prov. Crane(2)	2.0 T
Small Davit (2)	0.5 T

MANIFOLD ARRANGEMENT (Stainless Steel)	
Distance of cargo manifold to cargo manifold	2000 mm
Distance of cargo manifold to vpr. return manifold	1250 mm
Distance of manifolds to ship's rail	4600 mm
No of cargo connections per side	6
Distance of main deck to centre of manifold	2100 mm
Ht of manifold above WL SDWT condition	7.614 mtrs
Size of cargo connection	300 mm
V/L comply with latest OCIMF edition	Yes
V/L fitted with stern manifold	No

IG / VAPOUR EMISSION / VENTING	
I.G BLOWER CAPACITY (2 nos)	3750 M3/Hr Each
P/V VALVE PR./ VAC. SETTING	+1600 mm / -350 mm WG
P/V BREAKER PR./VAC. SETTING	+2100 mm / -700 mmWG

IMPORTANT DRAFTS	
Summer Drft:11.217 m	
SG.Blst Drft: 6.750 m	
Propeller Immersion:6.2m	

FIRE FIGHTING SYSTEM	
ENGINE ROOM	CO2 System
PAINT STR/BOW THRUSTER RM	CO2 System
CARGO AREA/SAMPLE LKR	Foam system / SPRINKLER